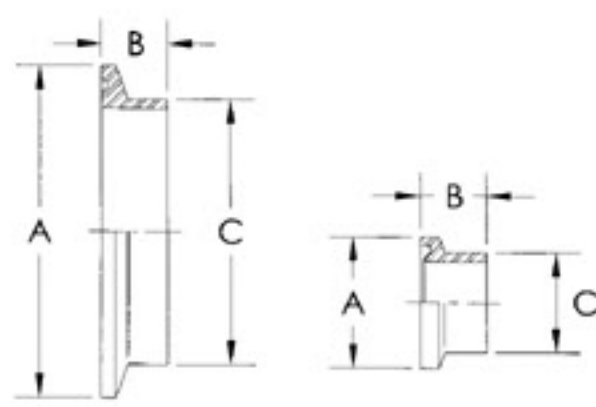
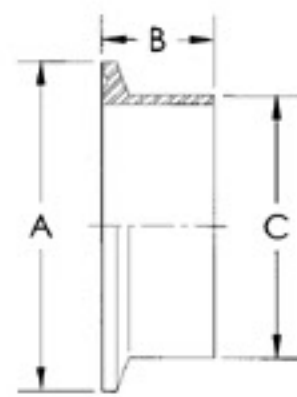


© 14WMP / Short Welding Ferrule



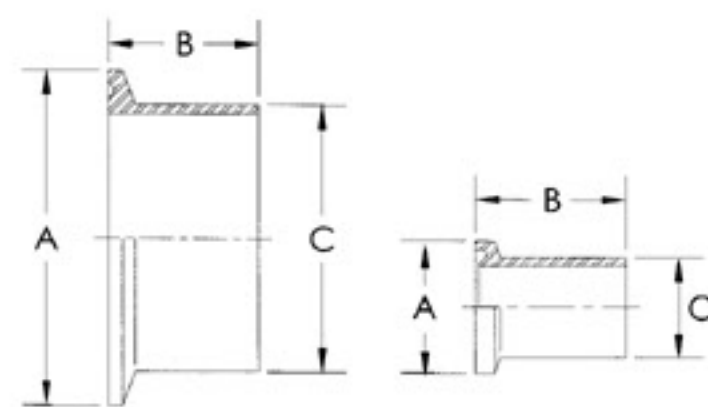
SIZE	A	B	C
1/2"	25.2	12.7	12.8
3/4"	25.2	12.7	19.2
1"	50.4	12.7	25.5
1.1/2"	50.4	12.7	38.2
2"	63.9	12.7	50.9
2.1/2"	77.4	12.7	63.6
3"	90.9	12.7	76.3
4"	118.9	15.9	101.7
6"	166.9	19.05	152.5
8"	217.7	22.2	203.3
10"	268.5	22.2	254.1
12"	319.3	22.2	304.9

© 14MMP / Welding Ferrule



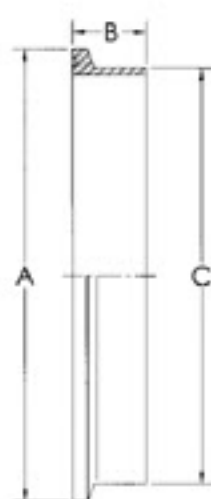
SIZE	A	B	C
1"	50.4	21.5	25.5
1.1/2"	50.4	21.5	38.2
2"	63.9	21.5	50.9
2.1/2"	77.4	21.5	63.6
3"	90.9	21.5	76.3
4"	118.9	21.5	101.7

© L14AM7 / Long Welding Ferrule



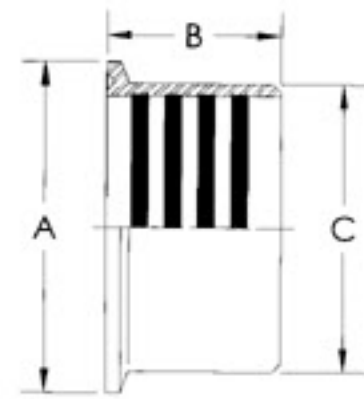
SIZE	A	B	C
1/2"	25.2	28.6	12.8
3/4"	25.2	28.6	19.2
1"	50.4	28.6	25.5
1.1/2"	50.4	28.6	38.2
2"	63.9	28.6	50.9
2.1/2"	77.4	28.6	63.6
3"	90.9	28.6	76.3
4"	118.9	28.6	101.7

© 14WLMO / Welding Ferrule



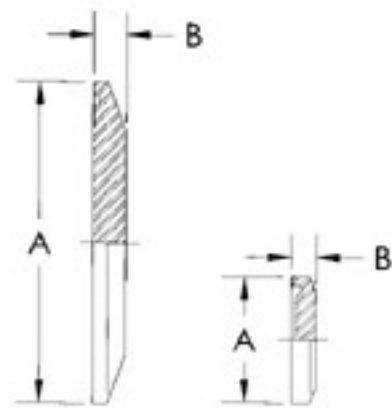
SIZE	A	B	C
6"	166.7	28	152.4
8"	217.7	28	203.2
10"	268.5	28	254.0
12"	319.3	28	304.8

© 14RMP / Recessless Ferrule



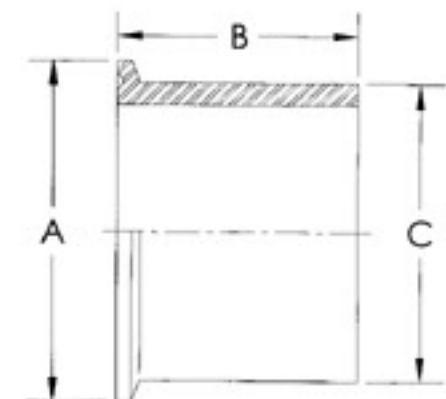
SIZE	A	B	C
1"	50.4	19.1	25.5
1.1/2"	50.4	28.6	38.2
2"	63.9	33.3	50.9
2.1/2"	77.4	34.9	63.6
3"	90.9	36.5	76.3
4"	118.9	38.1	101.7

© 16AMP / Solid End Cap



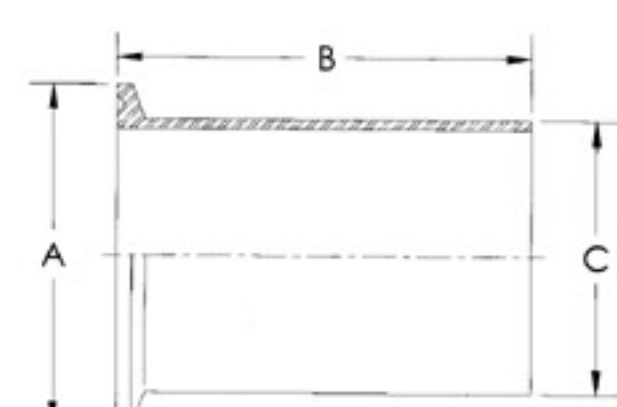
SIZE	A	B
1/2" & 3/4"	25.2	4.7
1" & 1.1/2"	50.4	6.4
2"	63.9	6.4
2.1/2"	77.4	6.4
3"	90.9	6.4
4"	118.9	6.4
6"	166.9	11.1
8"	217.7	11.1
10"	268.5	14.3
12"	319.3	14.3

© 14MPW / Tank Welding Ferrule



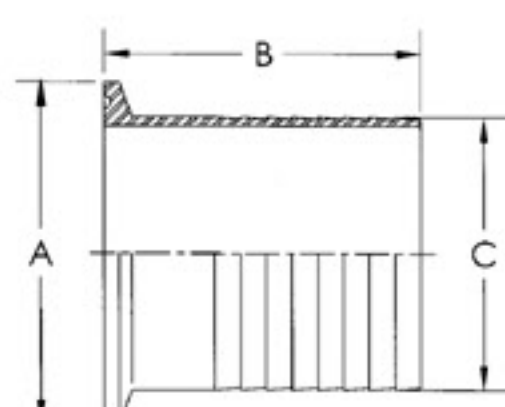
SIZE	A	B	C
1"	50.4	41.3	29.5
1.1/2"	50.4	41.3	42.6
2"	63.9	44.5	55.7
2.1/2"	77.4	44.5	68.8
3"	90.9	46.0	81.9
4"	118.9	54.0	108.1

© 14WLMP / Tank Welding Ferrule (Light)



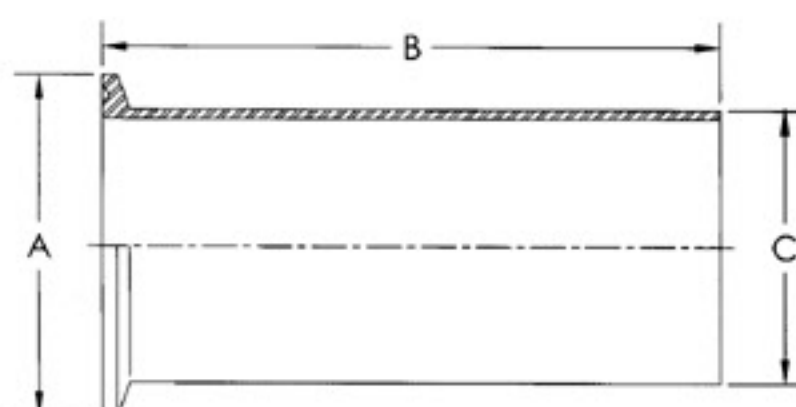
SIZE	A	B	C
1"	50.4	76.2	25.4
1.1/2"	50.4	76.2	38.1
2"	63.9	76.2	50.8
2.1/2"	77.4	76.2	63.5
3"	90.9	101.6	76.2
4"	118.9	101.6	101.6
6"	166.9	152.4	152.4
8"	217.7	152.4	203.2
10"	268.5	152.4	254.0
12"	319.3	152.4	304.8

© 14MPHR / Rubber Hose Adapter



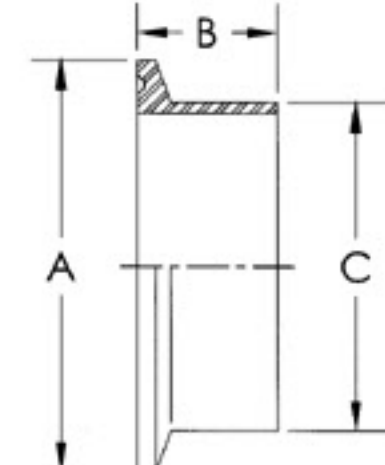
SIZE	A	B	C
1"	50.4	42.9	25.4
1.1/2"	50.4	42.9	38.1
2"	63.9	58.7	50.8
2.1/2"	77.4	59.5	63.5
3"	90.9	78.6	76.2
4"	118.9	86.5	101.6
6"	166.9	101.6	152.4
8"	217.7	101.6	203.2

© 14MPHT / Tygon Hose Adapter



SIZE	A	B	C
1"	50.4	114.3	25.4
1.1/2"	50.4	114.3	38.1
2"	63.9	114.3	50.8
2.1/2"	77.4	114.3	63.5
3"	90.9	114.3	76.2
4"	118.9	117.5	101.6

© ISO-14MMP / Welding Ferrule



SIZE	A	B	C
13.5	25.0	21.5	13.5
17.2	34.0	21.5	17.2
21.3	34.0	21.5	21.3
26.9	50.5	21.5	26.9
33.7	50.5	21.5	33.7
42.4	50.5	21.5	42.4
48.3	64.0	21.5	48.3
60.3	77.5	21.5	60.3
76.1	91.0	21.5	76.1
88.9	106.0	21.5	88.9
114.3	130.0	28.6	114.3
139.7	155.0	28.6	139.7
168.3	183.0	28.6	168.3
219.1	233.5	28.6	219.1